



APRIL 25-27, 2025

**Competition Location: (ORLA) Olympia Regional Learning Academy
2400 15th Ave SE Olympia WA**

**Host hotel: Best Western Plus Lacey Inn & Suites Olympia
8326 Quinault Dr NE Olympia, WA**



WHAT THIS HANDBOOK CONTAINS

This participant Handbook is an important part of your State Pageant Paperwork. You will find the Rules and Regulations regarding your State Pageant Competition as well as information on prizes and awards. Please make every effort to read these pages, as they will answer many of the questions you might have about the pageant.

HIGH QUALITY PAGEANTRY and low fees! We take great pride in the exceptional program we put on for all of the contestants and their families.

STATE REGISTRATION & LOCATION

In order to reserve your entry in the State pageant you must register online at www.wacinderella.com along with your \$100 non-refundable Registration fee.

Competition Location: (ORLA) Olympia Regional Learning Academy
2400 15th Ave SE Olympia WA

THERE IS A HOST HOTEL, CONTESTANTS CAN CHOOSE WHERE THEY WANT TO STAY OR TRAVEL BACK AND FORTH TO THE HOST VENUE. (THERE WILL BE AN AREA FOR CONTESTANTS TO CHANGE IN AT OUR HOST VENUE)

Host hotel: Best Western Plus Lacey Inn & Suites Olympia
8326 Quinault Dr NE Olympia, WA

REQUIRED COMPETITION CATEGORIES

CINDERELLA BABIES (Infant, Baby & Tiny Tot):

Infant 0-11 months Baby 12-23 months Tiny Tot 24-35 months

Photogenic, Baby Playtime, Party/Formal Wear Modeling & Casual Wear Modeling with Introduction (Intro is done by the parent in the Infant and Baby age divisions, Tiny Tots have the option to say their introduction by themselves if they prefer but its not necessary.

CINDERELLA GIRLS: (Tot, Miniature Miss, Miss, Teen & Woman):

Tot 3-6 years Miniature Miss 7-9 years Miss 10-12 years

Teen 13-17 years Woman 18-29 years Prince Charming 5-8 years

Photogenic, Interview, Party/Formal Wear Modeling, Casual Wear Modeling with Introduction & Tot Personality/Talent.

Orientation and Registration

There is a quick State Orientation for all contestants and parents and will held at the Western Banquet discussing the final competition.

Contestants typically dress to impress all weekend long@ Contestants Group photos will be taken by our state photographer Lori Gush! She attends every event that we do the whole weekend.

What happens at registration? Contestants can wear their crowns and sashes from previously won preliminary competitions at Registration. Contestants and parents check their EMCEE cards, get their contestant number, schedule, pick up their state t-shirt, turn in their official headshots, turn in souvenirs for the gift bags, turn in the gift for the gift exchange, go see Mr. Dan for music turn in at the sound booth, pay for tickets to parties and admission tickets for family members, get the state program book, contestants pick up their state gift bags, meet the royalty and the autograph table and can pay for official stage photos by our state photographer Lori Gush!

CONDUCT

At all official Cinderella Pageants, the emphasis is placed on the participants and adults displaying good manners and grooming, listening to and acknowledging instructions, adjusting to conditions, maintaining discipline and dependability, and above all, displaying excellent sportsmanship at all times. Any parent, teacher, guest, director or participant who conducts themselves in an unsportsmanlike/unladylike manner (before, during, or after an official Cinderella Pageant) will be subject to immediate dismissal from the pageant system. Such conduct on the part of the participant will mean automatic forfeiture of all awards and no refunds will be given. NO ALCOHOLIC BEVERAGES will be allowed in or around the staging area of the staging facility. This rule is enforced throughout the Cinderella Pageant System and includes participants, parents, and guests viewing the event. Any violation of this rule will mean immediate disqualification from the pageant system. All participants, chaperones, and guests MUST observe housing rules and curfews imposed by the pageant. Smoking by participants is strictly prohibited. Young ladies, chaperones, and guests who cannot observe the rules of the pageant are asked not to attend. NOTE: Disqualification from an official Cinderella event is a serious matter. If a participant is disqualified, she will not be eligible for a refund.

PAGEANT STANDARDS

A "standard of modesty" must be maintained throughout the pageant (includes casualwear, talent and party dress / formalwear competition and casual wear around the event). Garment removal is not allowed on stage in modeling. Props, such as tennis rackets, hats, purses, etc., are not allowed in modeling presentations, but are acceptable in talent presentations if the item is necessary for the presented talent. The prop must be USED in the routine and CANNOT be a piece of decoration or scenery.

Cosmetic dentistry is permissible. The use of cosmetics is allowed in all age brackets for stage events; however, makeup MUST be appropriate for the participant's age category. **PLEASE NOTE: Tots may not wear makeup for Interview!** Heavier makeup may be worn under strong stage lights. Artificial hair and false eyelashes are not allowed in the Cinderella 3-12 age divisions, unless it is the result of a medical

necessity (i.e. illness, chemotherapy, etc.). Girls of African American decent can wear artificial/real hair pieces. This was approved by the owner of International Cinderella in the state directors meeting in 2022. This does not apply to talent presentations.

Please note the judges have been instructed to use discretion in determining whether a participant has violated any rules and if such artifices are immediately discernible to the judges' panel, the contestant can be disqualified.

Official State Photography & Videography



Year after year, our state photographer produces wonderful keepsakes of our Cinderella participants. Do not miss out on this opportunity! At Cinderella State Finals, only members of the press, official photographer & purchased photo passes may take photos of participants during the actual competitions. This includes all preliminary & finals competitions. NO EXCEPTIONS! Parents can use the backdrops that are around the ballroom and take personal photos only. Parents also can take photos at the parties as well but will not interfere with the state photographer. Lori will post her official link in our Facebook group or will be given by email to pay in advance. Capture the magic with our state photo package available at registration (photo packages not available after registration). State Photographer is an independent contractor and not affiliated with the WA Cinderella State Pageant Program. Photos will be available via download, no returns on packages, and all sales final. Our state photographer is Lori Gush owner of Sparkle Portraits.

All Stage Events, crowning and parties \$125 Pictures of Your contestant is for all areas of competition – Opening number, Introduction, Casual Wear, Formal Wear, Talent/Tot Personality, and crowning. (party highlights are included)

SCHEDULE OF EVENTS & REGISTRATION A final pageant schedule will be available to all participants at state registration, in the contestant dressing room and online in the Facebook group.

PROGRAM BOOK

Please email Program Book Photo (Color or Black/White, Vertical Head Shot Photo & No Crown/Banners), Participant Name, Division & up to (4) Sponsors to wacinderella@gmail.com by March 16, 2024, deadline. PLEASE note we are not responsible for typographical errors. The cost of program book is \$25 and it's in full color!

2025 Cost and extra fees: NO ENTRIES WILL BE ACCEPTED AFTER APRIL 12, 2025 NO EXCEPTIONS!

State Entry Fee \$350

Deposit \$100 (will take off Entry fee)

(Example: after you pay your deposit your entry is \$250)

LAST DAY TO ENTER IS: APRIL 12, 2025 no exceptions! All fee's due by April 12, 2025.

1. If you attended a Kitsap Prelim or Charm Girl you get \$25 off for each event to take off for your state fee
 2. (Optional cost) In All Color State Program books are \$25 and must be paid for by April 20, 2025
 3. (Optional cost) 5 Optional events \$50 for all (Overall formal wear attire, overall casual wear attire, Best Interview Attire/Best baby playtime attire, overall, Tot Personality attire/overall talent costume, best overall photo in photogenic)
(PLEASE NOTE: OPTIONALS HAVE NOTHING TO DO WITH WINNING ANY STATE TITLE, THEY ARE JUDGED SEPERATLY AND ARE TROPHY AWARDS.
- Friday is Registration and Prince Gilbert Pool Party.
Held at the host hotel. This is not an open to the public event.
 - Saturday is Talent/Tot Personality, Interview, Casual Wear and the Western Party.
Party Entry is only for contestant and their families.
 - Sunday is Opening Number, Formal Wear and Crowning.

ADMISSION INFO:

Saturday Competition Day Admission is \$10 per person and ages 12 and under are \$5

Sunday Grand Finals Admission is \$10 per person and ages 12 and under are \$5

State Entry Fee for the contestant includes all events, all parties and meal.

Only one chaperone ticket per family accompanying contestant(s) covers Admission off all events and all parties. Meals are not included.

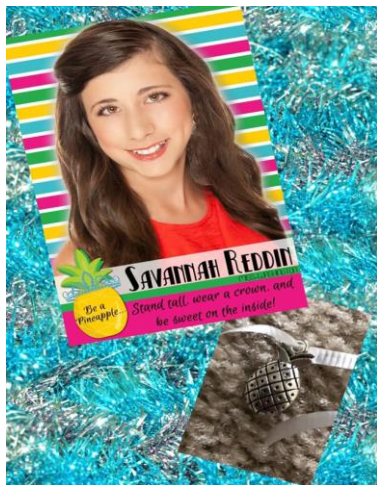
(Optional cost) State Photography \$125 (see page 4 about photography)

SIBLING DISCOUNT

Our Cinderella Program is a "Family Affair", where we encourage siblings to participate in state finals by not requiring a second family member to have an additional chaperone. Every child who participates will get an additional chaperone ticket. Siblings competing in the same age division will be separated in their order of appearance by taking one sister and moving her to another position in the lineup so they will not be appearing back-to-back in any phase of the pageant. (DID YOU KNOW???) This discount can be combined with your preliminary win on top of an additional \$25 off on your state fees!

SOUVENIR GIFT AND CONTESTANT GIFT EXCHANGE

A memorable part of the Cinderella pageant is the exchanging of souvenir gifts with other participants. You will need to bring a minimum of 50 gifts for the participants in your age division, staff, judges and the reigning queens. These souvenir gifts are tokens of friendship from you and your area and may be donated to you by your city, state, Chamber of Commerce or the merchants of your area. **They SHOULD NOT be expensive**; however, they may not be brochures or literature of any kind. Simple, small, and thoughtful items are desired and will be treasured.



Each gift should be personalized with your name, title and best wishes from your contestant (NO ADDRESSES, PLEASE). Upon arrival your souvenirs will be turned in at registration. Gifts will be distributed by the staff prior to the special "Souvenir Party" listed on the schedule and given out at the TEXMEX WESTERN PARTY DINNER. Use your imagination in preparing your souvenir gifts. We have found that the ideas are limitless. Some of the best gifts in the past have actually been made by the participants and their families. Remember, it is not the expense of the gift that is important, but rather the thought behind the gift that really makes it meaningful. Come on and join in the fun and help make this year's souvenir gift bags the most clever and creative in our history. **Your souvenir gift is NOT a scored part of the competition but is a fun special award given out to the best overall souvenir gift!**

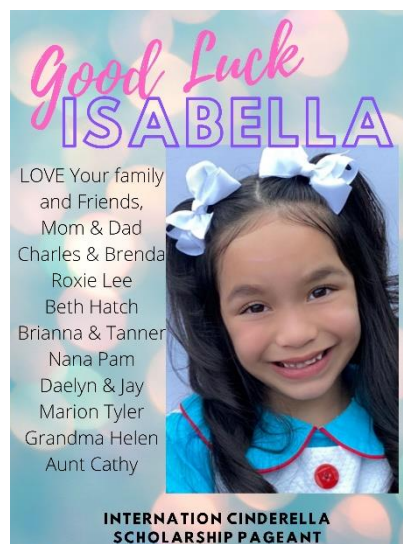
Example pic is a little silver charm bought in bulk off Amazon.com.



COVERGIRL AD INFO & COMMUNITY SUPPORT TITLES

YOU COULD BECOME THE "CINDERELLA COVER GIRL or COMMUNITY SUPPORT selling the official Every one or program own showing their community

Cover



TITLE HOLDER" by advertising pages in state program book. participant can place more photos in the book on their very advertising pages the different sides of personality and their backing.

Girl Crown

need one photo book. A separate

To qualify for the "Cover Girl Title" you only advertisement to be placed in the program

panel of judges will select a winner prior to the pageant. Judging is based on the participant's photogenic beauty, personality, photographic creativity, and the quality of the photograph. Participants may enter as many photos as they desire so long as they appear in additional advertising that they have purchased in the souvenir program book. One winning photograph in the entire pageant will appear on the special Cover Girl page in the front section of the program book. In addition to the distinct honor of appearing as the Cover Girl in the state program book, winner receives an official Cinderella crown and sash. Example to the left is Cover Girl winner from 2021.

Community Support Crown

These winners, along with the other contestants who are also vying for the Cinderella Cover Girl title, will also be eligible to win **the Community Support Crown is for the participant that sells the most advertising pages**. Get involved in your community and have your favorite businesses sponsor your Washington State Finals fees. If you have been awarded any title at a prelim, put your tiara and banner on and go to various business in your area. Be sure to tell them that the cost of an ad is tax deductible as an advertising expense. This award is designed to give special recognition to participants whose photos appear on additional advertising pages. The Community Support Title winner will also receive an official Cinderella Crown and Sash.

Ad Scholarships: Are available to use towards Washington State Pageant Fees. Only Full page Ads are accepted. AD pages cost \$50 each and a credit of 50% of sales will be the Scholarship and applied to the participant's state account. (Only one participant featured per ad there is NO AD SHARING) In other words... you sell a \$50 Ad page you get \$25 back!

AD Due Date: All Program Book Sponsor **Ads are due APRIL 12, 2025** (email to wacinderella@gmail.com and in the title line: AD Contestants Name and Age Division).

PARTIES

It is important that participants and chaperones attend all official functions and parties. Judges are allowed to attend these events and are looking for how participants interact with each other in a social setting. Proper attire is listed for participants for each of these events. Extra tickets will be sold at the door.

Prince Gilbert Pool Party:

This year Prince Gilbert is hosting a pool party! He;s ready to make a big splash to start off the state pageant!

Party Attire: Swimsuit of your choice, don't forget your pool accessories if you have them, goggles, floaties and towel are recommended if you have them!



THE SPIRIT OF CINDERELLA STICKS

This is for all the contestants! A very fun award to be handed out at this year's state pageant. Having the Spirit of Cinderella and just having fun! Spirit sticks are handed out at the Western Party to one contestant in each age division.

Western Party:

The Western party is a fun highlight to all the contestants competing at Washington Cinderella. This year we are having a pizza party with all the fun treats! At the western party the royalty will hand out spirit sticks and best western attire for each age division at the end of the party, souvenir bags are handed out to all the contestants, we will say goodbye to our Washington State Spirit Winner as she will give her final farewell, contestants will play games and dance with the royalty and of course we will eat sweet treats and pizza!!! One participant and one chaperone are included with your registration. Meal tickets are \$10 adults and \$5 kids ages 12 and under. Bring your dancing cowboy boots on for rip roaring good time at this party!

Party Attire: Western wear

MODELING PROCEDURE

The official CINDERELLA MODELING MUSIC will be used at the state finals for all Casualwear and Party dress/Formalwear modeling competitions. The music is precisely timed so that each participant has approximately the same amount of time on stage. The music contains electronic tones, rhythmic voids, and chimes that signal the start, stops, turns, and finish of the modeling presentation. Participants are encouraged to practice with the official modeling music available at www.wacinderella.com before attending the pageant. To include Casualwear & Partywear/Formalwear selections with all the electronic tones and signals. Also, included "collective judging" segment with entrance music, timed quarter turns, and exit music (Infant, Baby & Tiny Tot Divisions face forward/do not turn). Also available is the instruction sheet on "How to Model" at an official Cinderella Pageant. The music contains professionally produced songs recorded in stereo with a full orchestra. Every participant will feel "at home" on the Cinderella stage with the music she has practiced to at home.

Your grooming, manners, and interaction with other contestants is important at all times. Your pageant weekend wardrobe (other than presentation garments) should be casual but neat. DO NOT overdress for informal occasions. HAVE FUN!

SELECTING YOUR WARDROBE

(examples are on www.wacinderella.com) Cinderella stresses “real clothes on real people”, therefore the wardrobe that you select should reflect current trends in clothing for your particular age group. Naturally, good taste and a sense of modesty should be a part of selecting the wardrobe.

In other words, your party dress (formal wear), should be something that a person your age would ACTUALLY WEAR to a formal event.... NOT a dress that could only be worn to a pageant (the same thing applies to Interview and Casualwear garments). Garments chosen should be in good taste and appropriate for the participant’s age.

Cinderella Pageants were not designed to be a "clothes show" and your pageant wardrobe should be kept simple and appropriate for your age group. The judges will be judging the participants and NOT their wardrobes. Flaunting an OVERLY EXPENSIVE WARDROBE is often detrimental to the participant's image as a wholesome, unaffected, and “natural” girl. The judges often see the participants between judging sessions, so having a neat appearance always is important. Every participant will have garments in her own wardrobe that are appropriate for the International Pageant (having all new clothes is not necessary). Shorts and Cinderella T-shirts are an excellent choice for our casual parties.

Interview with Judges

Tot, Miniature Miss and Miss Age divisions: A casual garment of your choice. The garment might be a casual skirt and blouse, a casual dress or pants and blouse. Teen & Woman Age Divisions: A tailored business suit or dress is appropriate. Prince Charming ages 7-10 years: A nice Easter type/church outfit. Example to the right is Tot Interview.



Casualwear Modeling

All age divisions: The garment can be “dressy casual” and may include pants, blouse, casual dress, and casual jackets. (No purses or handbags.) Example to the left is Teen Casual Wear.

Partywear/Formalwear Modeling

Tot, Miniature Miss and Miss Age divisions: below the knee but may NOT be formal (full) be an Easter Sunday or First Communion division. For older divisions, a dress that she wedding would be appropriate. Any color is manners, and interaction with other times. Your pageant weekend wardrobe garments) should be casual but neat. DO occasions. HAVE FUN! 12 Teen & Woman must be formal (full) length. Additionally, it Teens should not look like the older Division. Example to the right is Miss Formal



The hemline may be above or length. Some examples might dress for the youngest might wear to a family acceptable. Your grooming, contestants is important at all (other than presentation NOT overdress for informal Age divisions: The hemline should be age appropriate. participants in the, Woman Wear.



Tot Personality

The garment can be any garment of your choice. However, it should be stylish, age appropriate and comfortable to sit in. Also, it should enhance the personality of the child.

WHAT IS TOT PERSONALITY

Instead of performing a talent, the Cinderella Tot participants ages 3-6 years

compete in an onstage interview. During the onstage interview, the participant will be required to make a personal statement about herself giving her name, age, and hometown. The master-of-ceremonies will then ask her a few questions relating to the Information on her biographical sketch. The onstage interview is designed to encourage participants to develop their skills in communication and personality projection. This is not an intelligence test, but rather, to display the communication skills and the personality of the Cinderella Tot being Interviewed. The participant with the best onstage interview is named the International Tot Personality Winner.





Talent Competition Miniature Miss, Miss, Teen & Woman Age divisions: The garment chosen should be appropriate for the talent being performed. It may be a costume. As always, it should be stylish but age appropriate. More information under TALENT below.

PHOTOGENIC GIRL



All participants compete for the "Photogenic Girl" division. The photo may

award for their age not be larger than an 8x10 & turned in at registration. You may also use this photo for the Program Book's "Photo Roster" section as well as any Additional Advertising. However, alternate photos may be used for the Photo Roster as well as Advertising Pages. Please note that the submitted photo becomes the property of the Cinderella Scholarship Program and will be used by the judge's panel for reference and judging and may be used for publicity before, during and after the pageant. Don't write directly on the photo put a label on the back so you don't damage the photo or the ink doesn't bleed through the photo. These photos will in no way affect the adjudication for the Overall, Talent or Beauty titles; however, the photo should be as attractive as possible. The Photogenic Girl competition is an important part of the Cinderella International Finals. It was designed to give recognition to those young ladies with special photographic qualities and has become a valuable asset to those seeking careers in the modeling industry.

The Photogenic Girl in each age division will be selected on the following basis: Photographic beauty, captured personality or mood, composition, and the technical quality of the photograph. Photographs should not include trophies, crowns or banners won at a previous pageant. The participant should take care that the photo is recent and that it closely resembles the participant as she will look during her State Pageant competition (i.e. age, hair style/color, etc) Remember the judges use these photos for the Photogenic Competition and as a reference tool during their deliberations. While Cinderella makes every effort to return these photos before the end of the pageant, the pageant cannot be held responsible for any photo that is lost or damaged.

MISS CONGENALITY

Mini Miss, Miss, Teen and Woman Contestants only: One of the most important awards given to one contestant in the Cinderella Mini Miss to Woman division is the Congeniality Award. The Congeniality Winner is selected by the other contestants as the friendliest and most cooperative participant during pageant week. Voting will take place Sunday Morning.

CINDERELLA BEAUTY JUDGING CRITERIA

The Cinderella Beauty is an especially important part of the pageant system. The Cinderella Beauty winners and alternates are selected from their ranking in Interview, Party dress/Formalwear and Casualwear. The Cinderella Beauty Title is about more than physical "beauty". Judges are asked to consider the "total contestant" and not just physical appearance. Inner beauty, grooming, poise, stage presence and self-confidence are important parts of the judging criteria to select a Cinderella Beauty Winner. Garment choice also plays a role in the score.

As mentioned throughout this handbook, age appropriate attire is required and expected. The garment selected should also be visually appealing in cut, color, and style. Also, the garment selected should be able to be confidently worn to a "real life" event. The participant should ask herself the following, "Is this something I can wear to a place other than a pageant". If the answer is "Yes", then it should be appropriate for Cinderella.

JUDGING

The adjudication at the Cinderella State Finals is always of the highest quality with an experienced panel of judges using a point and consultation system. The judges' decision is always final, and no posting of ballots or rating is permitted. We do not provide score sheets or comments. Please do not ask the Judges for personal comments after the pageant as they are NOT ALLOWED TO GIVE PERSONAL CRITIQUES.

All participants compete in Interview, Party dress (formalwear for Cinderella Teen and Cinderella Woman participants) and Casualwear... thus making them eligible for all Cinderella Beauty awards. Those participants who also compete in talent (onstage interview for the 3-6 age division) will also be eligible for the Overall Titles and Talent Awards (Tot Personality Award for the 3-6 age division). All participants will introduce themselves at the microphone during their Casualwear presentation. The judges will NOT be searching for a "miniature adult" in the children's divisions. Likewise, the judges will NOT be looking for a "college-age" prototype in the teen division.

The Cinderella Scholarship Program is looking for a natural, wholesome type of winner to carry the official Cinderella State Title. The State Talent Winner, Tot Personality Winner and Beauty winners will be selected from the preliminary rounds of competition and do not have to be one of the top Ten Semi-finalists. The judges will select a Top Five in each age division (If there is 6+contestants in each of the Tot-Teen Divisions) to re-compete at State Finals for the selection of the State Overall Winners. If there

are less than three participants in an age division, the state office reserves the right to cancel or combine the division.

PRODUCTION NUMBER

Production number is in your formal attire and is called the parade of dresses! We will be taking photos at all our production practice so wear something comfortable. Opening number is easy and fun for all please do not stress over the opening number.

TALENT

Email Talent Music to: wacinderella@gmail.com Subject: Talent Music, Name & Division (due by March 16, 2024) Please bring a Backup CD, thumb drive or have music downloaded onto your phone with your USB cable to be held in reserve in case something happens to the original.

The judges will consider the quality of recordings in selecting the finalists. A “stop” in the music for dialogue, etc., will NOT be allowed; however, dialogue may be timed to a continuous track. Music should be edited to stop at the end of the talent presentation. (MUST BE IN MP3 FORMAT) SPECIAL NOTE: TALENT PRESENTATIONS MUST NOT EXCEED 2:30 MINUTES IN LENGTH. Recommended 2-minute time limit as overtime talents maybe disqualified or scored down at the judge’s discretion.



Individual talent rehearsals will NOT be held during the pageant. All talent presentations which include a singing or speaking part MUST use a microphone. The State Pageant will provide microphones (wireless handheld/stand or headset). A pre-taped accompaniment is suggested.

All props must be small enough to be carried onto the stage by no more than one (1) person. Individual scenery will not be allowed; however, a “working prop” may be used if essential to the performance.

Any equipment, other than sound equipment and microphones will be the sole responsibility of the contestant. **(State venue will NOT have a piano available)**. Due to building regulations, the use of acrobatic equipment with hanging items such as silks and hoops, are strictly prohibited. Acrobatic mats are limited to one (1) regulation size mat.

Also, the use of fire, sharp juggling knives or water is strictly prohibited.

Additionally, any act that is considered dangerous to the performer, staff or audience will be prohibited.

The pageant assumes no responsibility for loss or damage to props during the event. If a prop is used, the chaperone or talent teacher must accompany the participant backstage before the talent act to supervise the placement of the prop. Parents can be backstage if there are props your child needs help with only.

Talent costumes or presentations of a suggestive nature will mean automatic disqualification from competition. Discretion should be used in selecting talent material that is too mature or “adult” for the participant’s age division. Garment removal is not allowed. Crop tops are acceptable if they are in good taste. Talent will be judged on: 1) Appearance; 2) Composition of Routine; 3) Variety & Difficulty; 4) Execution; 5) Presentation.

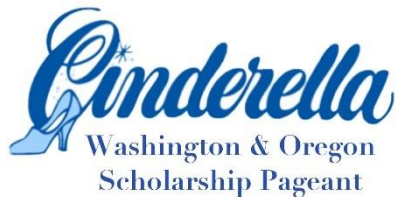
LIMITATIONS OF RESPONSIBILITY

The pageant will NOT assume responsibility for lost articles or personal property and is NOT responsible for accidents, mishaps, or the personal care of the participants. This is the sole responsibility of the chaperone. Although the pageant's official insurance coverage does cover medical expense for accidents (NOT ILLNESS) during the pageant, the pageant does not assume any liability or responsibility beyond the limitations of the Cinderella Registration & Insurance Program. Each participant's parents or official guardian MUST sign the official liability release form, which is included on the state entry forms.

PRESS INFORMATION

The Cinderella Scholarship Pageants are newsworthy events and should garner excellent coverage from your local news media. To get the best coverage, you should alert your friends and family across the state to request information about the state pageant (before, during and after) from their local news sources. This should begin now. If the media is alerted that a local participant is representing your community at the official state pageant and they have been contacted beforehand, they should offer excellent publicity. Ask your director for a press release. Farewell photos make excellent news and mayors, governors and other public officials will usually cooperate in making a proclamation honoring their state's representative.

WHAT IS EXPECTED OF A STATE OVERALL WINNER



Winners of an official Cinderella State title are to conduct themselves with the dignity of the important title they hold. Failure to proceed to the next level of competition after winning a state title to attend International Cinderella held in Dallas TX in July 2025 (Exception: Critical Illness or an act of God) will cause automatic forfeiture of the title and all rights thereof. The title will not have to be relinquished if reasonable notice is given and the circumstances for not attending

the International Cinderella Pageant are deemed unavoidable by the state director and the International Director Fred Vollman; however, the first alternate will be eligible to fill the position at the next level of competition if she chooses to do so. Those state winners who do not attend the international finals forfeit all scholarships and awards. All awards and gifts will be returned to the state director if a state title is relinquished such as: Overall Crown, Overall Sash, Overall Trophy and crown box. (Crown boxes are gifts from the outgoing royalty to the newly crowned royalty).

State Overall winners and a parent/guardian will be required to sign an official contract for the year that lists 75 percent of appearances, crowning their successors, attending the International Cinderella Pageant, rules and regulations that are required while they hold their title.

Official WA State Cinderella titleholders crowned as Overall Winners are prohibited from competing in any other beauty pageants with a "next level" of competition until they have crowned their successor for the following year. Should any Overall titleholder choose to participate in another pageant competition, (regardless if they win or lose) this will result in the forfeiture of their state title, and they will be permanently disqualified from participating in the Washington State Program. Additionally,

notification of this disqualification will be sent to the International Cinderella Pageant for formal recognition.

If a state titleholder happens to win and International Cinderella Overall title, the rules for International winners state you may not compete in any other pageant until they have crowned their successors and must agree to abide by all rules and regulations as stipulated in International Cinderella handbook. If a Washington State overall state titleholder wins and International title she will crown her new state successor that will be held at official state event after the International competition. Cinderella Infant and Baby titles & Prince Charming titles reign ends on January of the new year.

CROWNING ON FINALS DAY

The fabulous states finals of the Cinderella Scholarship Pageant will be a “thrill of a lifetime” for every participant and certainly many people will want to share these marvelous memories. The parents, friends, relatives, and special guests of the participants are cordially invited to attend any and all of the official state pageant functions. The competition is fantastic, and we know they will enjoy seeing the state’s finest young talent and see who will be crowned the next state title holders. Dressing facilities will not be provided for the contestants on the last day of competition, parents/chaperones should have their contestant ready before checking out of the hotel. Each contestant is solely responsible for her own garments and personal articles on finals day. Please make sure that you don’t forget anything on finals day.



OFFICIAL ROYALTY MEETING AFTER CROWNING

Following Finals, the newly crowned Overall Queens and (1) Chaperone will be required to meet, Sign the Queen State Contract and review State & International Requirements. DID YOU KNOW? All other state winners and participants who competed at our state pageant and would like to attend the International Cinderella Pageant be sure to contact the state Director Carey Sanchez by phone or email. There are discounts for everyone to go to the international pageant to go as TEAM WASHINGTON!





Cinderella

GIRL PLEDGE

On my honor,

**I promise to do my best to live up to the high standards
of the Cinderella Scholarship Program and Pageant.**

To honor my God and country;

to always conduct myself in a manner that is becoming to a young lady;

to keep myself morally straight;

to respect my mother and father;

to recognize the rights of others;

to keep the competitive spirit and be a good loser as well as a good winner;

and dedicate myself to a world united in peace through love,

mutual trust and understanding among the peoples of all nations,
races and creeds.

2024 Washington State Cinderella Awards

Cinderella Girls Overall Winners Tot through Cinderella Woman Divisions

Official Cinderella Round Crown
Satin Embroidered Banner
Custom Cinderella Trophy
Use of Official WA Royalty Robe during Reign
Use of State Royalty Dress/outfit
**End of reign Scholarship Award
\$275 towards International Fees
Royalty Jacket
Custom Garment Bag
State Photo Shoot
Gifts Throughout the year such as:
Scrapbook, custom Cinderella glass ornament, State rhinestone scepter and
custom scepter case and more

Beauty, Talent/Personality & Photogenic Tot through Cinderella Woman Divisions

Official Cinderella Round Crown
Satin Embroidered Banner
Custom Cinderella Trophy
\$275 towards International Fees

1st, 2nd and 3rd Alternate Winners only
Official Trophy

Washington Cinderella Babies Overall Winners

Official Cinderella Round Crown
Satin Embroidered Banner
Custom Cinderella Trophy
Use of Official WA Royalty Robe during Reign
CASH Scholarship Award
\$150 towards International Fees
Royalty Jacket
Custom Garment Bag if traveling to International Cinderella
State Photo Shoot
Gifts Throughout the year such as:
Scrapbook, custom blanket, custom Cinderella glass ornament, State rhinestone
scepter and custom scepter case

Washington Beauty, Best Personality & Photogenic

Official Cinderella Round Crown
Ribbon Banner
Custom Cinderella Trophy
\$150 towards International Fees

Community Support Winner and Cover Girl Winner

Official Cinderella Crown
Satin Embroidered Banner

*Awards based upon 85 or more participants,
Tot through Teen, attending the 2024 Washington State Pageant
*84-65 Participants: Overall - \$400.00 Award
*65-46 Participants: Overall - \$300.00 Award
*45-36/[Participants: Overall - \$200 Award
*Below 35 Participants: Overall - \$100 Award